



# Full HD Surgical Endoscopy Camera

## Full HD Surgical Endoscopy Camera

Our Full HD Endoscopy camera delivers a natural colour reproduction and convinces through the brilliant and sharp detail rendition. The camera feature all technical characteristics and is ideal for a wide range of applications.



CAT NO. SK 2000

### Product benefits

- 1/1.8" CMOS digital signal processor
- Manual white balance•
- Automatic gain
- Submersible camera head and cable
- C-Mount
- Main switch illuminated

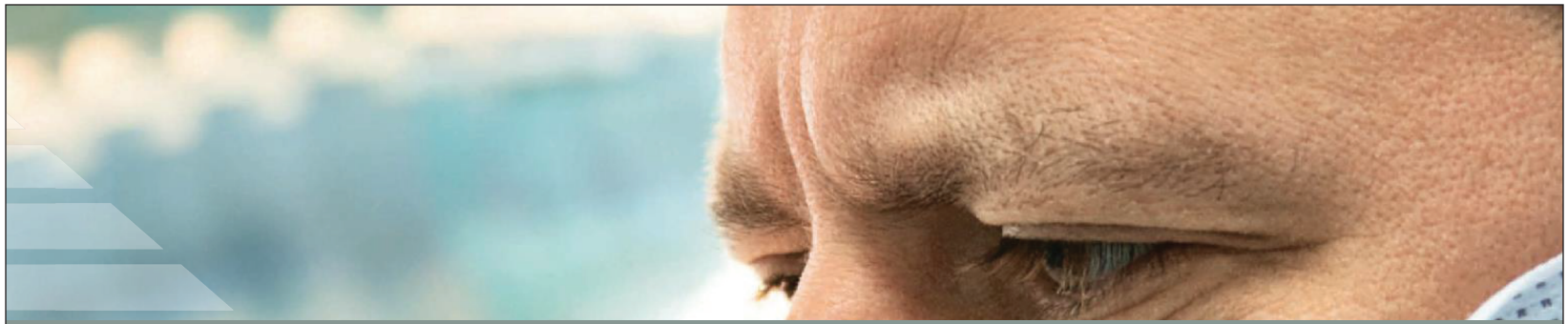
Resolution	1920 x 1080 pixels
Video output	HDMI (1080 P@60hz) , DVI (1080 P@60hz) SDI (1080 @ 60hz) , CVBS (720 X 576)
Frame Rate	60 F/s
Functions on the front panel and camera head	Whit balance and Freeze
Scope of delivery	CPU, camera head with 3m cable, mains cable, BNC cable



High-resolution digital medical camera with  
soakable camera head, PAL Technical data:

Image Sensor	1/1.8" CMOS
Resolution	1920 x 1080
Frame Rate	60f/s
Exposure	Global
Button Function	Freeze, white balance etc.
CCU Image Processing Board	
Output	HDMI (1080 P@60hz) , DVI (1080 P@60hz)
	SDI (1080 I@60hz) , CVBS (720 x 576)
Image Processing	Noise reduction, color rendition, edge enhancement, contrast adjustment, image magnification, dead pixel elimination
Light Source	Multiple modes for light sources of LED, Xenon Lamp etc.
White Balance	One button for automatic white balance
Photometry	2 types - Average/Peak, optional region
Parameter Adjustment	Brightness, R/G/B Saturation, Sharpness, Max. Gain, Gamma, Magnification, Mirror
Panel Button	Menu, White Balance, Freeze, Save etc.
Image Saving	Resolution : 1920 x 1080, Format : BMP,
	Quality: Non-destructive, Memory : SD card
Menu Language	English
Recording Board (Optional)	
Model	
Video Saving	Resolution : 1920 x 1080, Format : TS
	Code Rate : 19Mbps
Image Saving	Resolution : 1920x1080, Format : JPG
Interface	Input : HDMI, Output : HDMI
	Memory : USB
USB Drive	Flash Memory or HDD, FAT32





THE HD TV Adapter convince through the new developed, increased lens system. This lens system which is calculated in HD quality, allow images of higher contrast and brilliant sharpness. The compact construction and the ergonomically adapted focusing enable an easier handling.

TV Adapter



Autoclavable  
TV Adapter



Vario TV Adapter



TV21.001L

TV-Adapter focal length  $f=21,25,28,35\text{mm}$   
for SD Cameras

Technical data's:

- Camera screw thread: C-Mount
- Standard-coupling enables the adaptability of camera to all endoscopes with DIN 58105
- Focusable
- One-lens system
- submersible for medical application

**M/s DEVESH MEDITECH**

Plot No. 09, 3rd Floor, Gulabi Bagh, Industrial Culabi Bagh, Delhi-110007 India



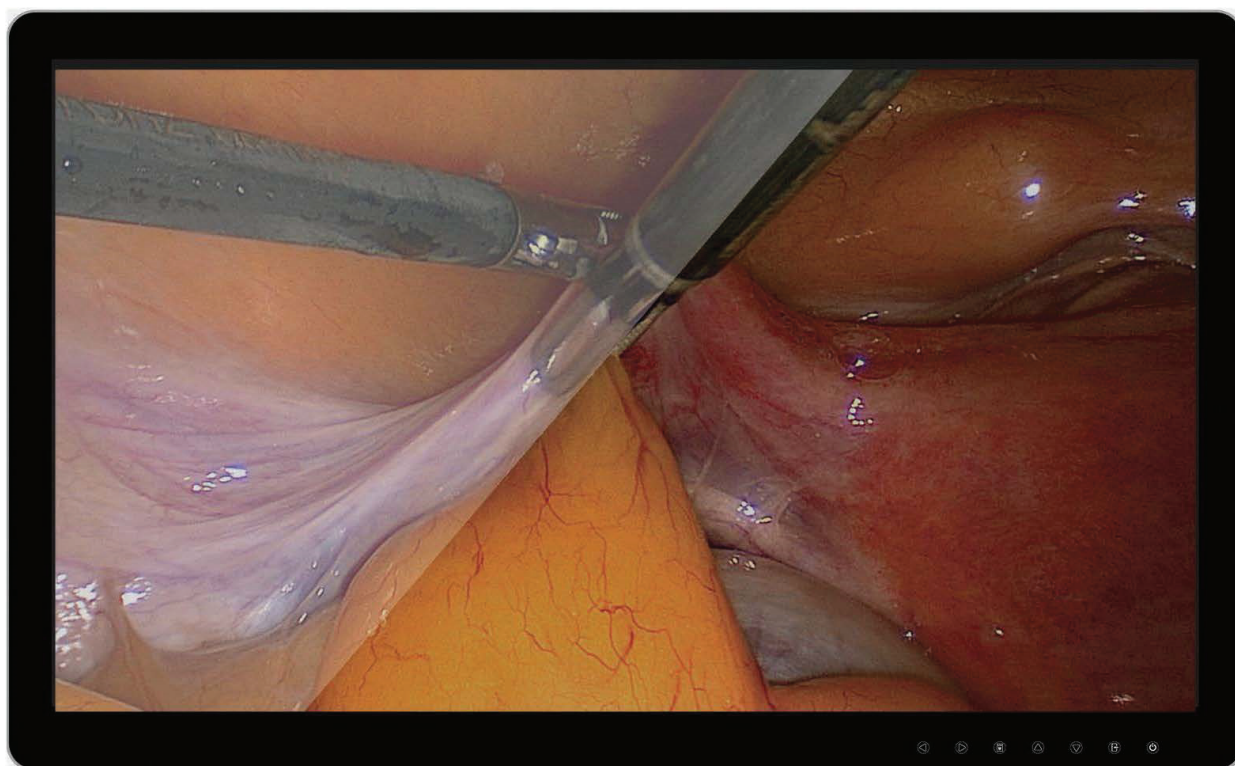
STORK

Stork Medical Display Serves Over 2 Billion Patients

# SK270AG

## Surgical Monitor

STORK surgical monitor equip with full HD LCD panel, with accurate colour reproduction, smooth dynamic image display, and wide viewing angles. It meets today's rapid change for medical display, and can clearly and accurately observe the surgical spots in minimally invasive surgery (MIS). White frame, waterproof design, antibacterial treatment, fully compliant with electromagnetic regulations, multiple video input and output interfaces. These make the product full meet the requirements of various endoscopes, operating rooms, and ICU display.



MEDICAL DISPLAY EXPERT



## Product Features

### 1. Accurate colour reproduction

Stork surgical monitors use 12BIT technology, which can linearly express more than 68.7 billion colors, so as to accurately restore the colour of human tissue during minimally invasive surgery, and the surgeon can make more accurate judgements.

### 2. Good layering

The professional monitor for stork endoscopic operating room adopts the highest-level medical LCD panel, which has good colour, high brightness and high contrast. So doctors could better distinguish various tissues in the operation and see a clear and transparent clinical images during the operation.

### 3. Smooth dynamic images

The response time of stork surgical monitors is less than 20ms, so that it can smoothly present the surgical images from SD to HD, clearly showing the bleeding situation and other delicate operations during the operation, without smear and jitter.

### 4. Meeting the requirements of operating room purification and anti-interference

Stork surgical monitors adopt a white dust-free design, which meets the requirements for purification of surgical equipment in the operating room. The metal-enclosed design can effectively prevent dust and liquid pollution during the operation. The body of the metal shell and the built-in shielding circuit can effectively prevent the interference of electronic surgical equipment such as high-frequency electrosurgical equipment, ensuring the stability of the surgical display.

### 5. Multiple I/O interface

The Stork surgical monitor is compatible with a variety of analog and digital signals, and has good compatibility with the camera systems of the world's major hard and soft lens brands.

## Specification

MODEL No.	SK270AG
Back light	LED
Diagonal size	27"
Display area size	622.4 (H) x 364.2 (V)mm
Resolution	1920 x 1080 (HD 1080p)
Aspect ration	16:9
Dot pitch	0.3114 (H) x 0.3114 (V)mm
Response time (typ)	14ms
Maximum brightness	1000cd/m <sup>2</sup>
Contrast	1000:1
Color depth (LUT)	68.7 Billion Colours (12bit)
Viewing angle	≥178°
Lookup table (LUT)	GAMMA 1.8, GAMMA 2.0, GAMMA 2.2, GAMMA 2.4, GAMMA 2.6, DICOM
Video input	DVI-I, CVBS, S-VIDEO, YPbPr, RGBS, SDI, HDMI, VGA
Video output	CVBS, SDI, DVI-D
Power requirements	100 ~ 240V, 50/60Hz
Maximum power	84W
Shell colour	WHITE
External dimensions with base	647 x 481 x 237.5mm
External dimensions without base	647 x 398.2 x 65.4mm
Net weight (with base)	16 Kg
Net weight (without base)	10 kG
Installation standard	VESA : 100*100mm
Certification	CCC, CE, CEC

**M/s DEVESH MEDITECH**

Plot No. 09, 3rd Floor, Gulabi Bagh, Industrial Culabi Bagh, Delhi-110007 India



# STORK

## LAPAROSCOPE



### Neue HD Optiken

#### Erhöhte Lebensdauer

##### DEHNUNGSFREIE GLASFASERN

Das System wurde so konzipiert, dass die Glasfasern dehnungsfrei befestigt sind. Somit wird weniger Stress auf das Gesamtsystem im Besonderen auf die Lichteintritts- und Lichtaustrittsflächen gebracht, was zu einer verbesserten Lebensdauer führt.

#### GOLD-STANDARD

Das Planglas unserer Endoskope wird nach dem neuesten Stand der Technik nicht lediglich verklebt, sondern mit Goldlot verlötet. Das Eindringen von Feuchtigkeit wird besser unterbunden und deshalb sind unsere Endoskope dichter und widerstandsfähiger.

#### Klare und helle Sicht

Für eine klare und einzigartige Sicht bieten unsere Endoskope erstklassige HD-Qualität. Zusammen mit der optimierten Beleuchtung resultiert ein sehr helles und klares Bild, reich an Kontrast.

Hinzu kommt eine erhöhte Schärfentiefe, dass das Verändern des Arbeitsabstandes ohne Nachfokussierung möglich macht. Beste Bildqualität durch Verminderung der chromatischen Aberration und Reflektion.

#### Verbesserte Beleuchtung

Für unsere neue Familie HD-Endoskope wurde ein besonderer Schwerpunkt auf die Schaffung von homogener und scharfkantiger Beleuchtung gelegt.

### New HD Endoscopes

#### Increased durability

##### FLOATING GLASS FIBRES

The endoscopes are designed, so that the glass fibers are mounted without continuous tension. This results in less stress on the overall mechanical system, in particular on the light entrance and light exit surfaces. This enhances the life expectancy and improves service life.

#### GOLD STANDARD

According the latest state of the art, the sightglass is fixed in place with gold solder instead of glue. This guarantees a better fit and improves protection against ingress of moisture. Additionally it enables the occurring stress during any autoclave-cycle to better dispense.

#### Clear and bright view

For a clear and unique view our endoscopes offer high HD quality. Together with the optimized illumination they offer a very bright and clear picture, which is rich in contrast.

Added to this is an increased depth of field, which enables the user to change the working distance without having to refocus.

We also offer best image quality by reducing the chromatic aberration and reflections.

#### Better illumination

For our new family HD endoscopes, special emphasis was placed on the creation of homogeneous and sharp-edged lighting.

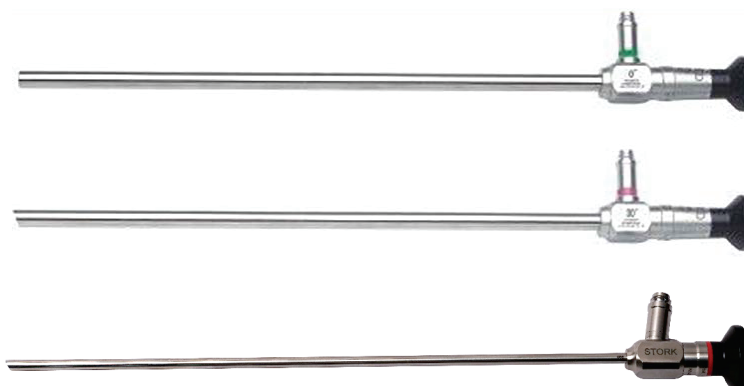
### Φ HD 10mm Endoscope

S800B 0° Endoscope (Angle of field: 70°)  
Φ 10mm x 325mm

S830B 30° Endoscope (Angle of field: 70°)  
Φ 10mm x 325mm

### Φ HD 5mm Laparoscope

S1830 30° Endoscope  
Φ 5mm x 290mm



**M/s DEVESH MEDITECH**

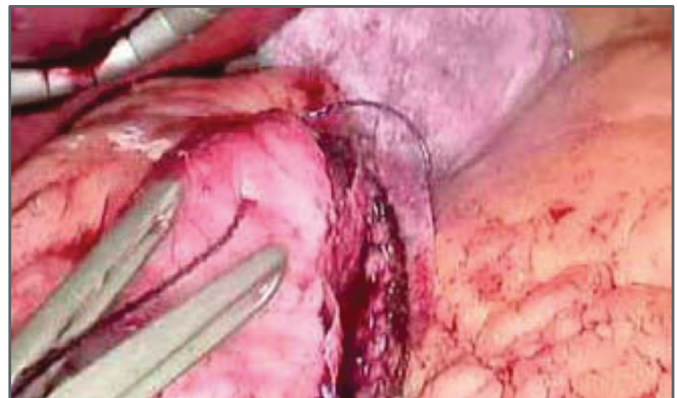
Plot No. 09, 3rd Floor, Gulabi Bagh, Industrial Culabi Bagh, Delhi-110007 India

## ENDOSCOPY LED LIGHT SOURCE



CT No.: SK LA300

- As powerful as a 300W Xenon light source
- LED lifespan up to 50,000 hours
- Daylight color temperature\*\* for optimum contrast



\*equivalent to 300 Watts Xenon light Source \*\*6500°K



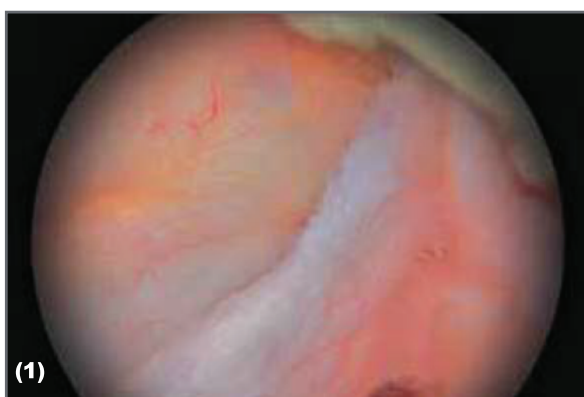
# LIGHT SOURCE SPECIFICATIONS

## Specifications

- LED Technology
- Light intensity of a 300W light source
- Color temperature : 6500°K
- LED lifetime : up to 50.000h
- Laparoscopic LED light source
- Automatic over temperature protection
- Size (D x W x H) : 300 x 310 x 120mm
- Weight : 3000g
- Power consumption : 140 VA
- Input voltage : 100-230 VAC / 50-60 Hz
- Compatible with Storz type light cables (Olympus in option)
- Continuous service

## Regulatory & Environment

- Operating Temperature range : +10°C / +40°C
- Operating Relative Humidity range : 30 to 75%
- Transport and storage Temperature range : -10°C / +45°C
- Transport and storage Relative Humidity range : 20 to 85%
- Operating, Transport and Storage Atmospheric pressure range : 700hPa to 1060hPa



Comparison of homogeneity of light between a Xenon (1) and the LED (2) light source

**CT No.: SK FB900**



**CT No.: SK LA300**

**M/s DEVESH MEDITECH**

Plot No. 09, 3rd Floor, Gulabi Bagh, Industrial Culabi Bagh, Delhi-110007 India



# STORK

## CO2 INSUFFLATOR



**CAT No.: SK4500**

 **Increase Set Pressure, Set Flow**

 **Decrease Set Pressure, Set Flow**

 **Air (optional)**

 **Mode**

 **Reset Gas Volume used**

 **Connector for gas warmer**

 **CO<sub>2</sub> Outlet**

**Output Pressure Range: 5 - 45 mmHg**

**Output Flow Range: 1 - 45 LPM**

**Output Gas Temperature: Body Temp.**

**Input Power : 100 - 264 VAC, 50-60 Hz**

**Accessories: High pressure regulator**

**PU tube for CO<sub>2</sub> gas inlet**

**Heater assembly for CO<sub>2</sub> gas warming**

**STORK** CO<sub>2</sub> Insufflator comes extremely handy during Laproscopic Surgeries. It provides optimum CO<sub>2</sub> flow required to maintain CO<sub>2</sub> pressure. CO<sub>2</sub> flow is adjusted very quickly which caters to a very small flows in the beginning, through veresse needle, continuously varying leakages throughout surgery and high flow requirements when suction is applied. It delivers warm gas for patient comfort. Pressure setting can be adjusted from 5 mm Hg to 45 mmHg in steps of 1 mm Hg. CO<sub>2</sub> flow can be adjusted from 1 Litre to 45 Litres in steps of 1 Litre. Mode of operation, set pressure, actual pressure, set flow, actual flow and total volume of CO<sub>2</sub> gas used are shown on front panel by bright displays. Soft touch buttons are provided on front panel. Secured connection is provided for warmer. Buzzer sounds in case of over pressure. There is a visual indication and buzzer in case of no- CO<sub>2</sub>-gas condition. Flow blockage at patient end is sensed and flow is immediately stopped. It is resumed after 5 seconds. Internal pressure regulator is used for safe operation. Switch Mode Power Supply is used, which works over the range of 100 VAC to 240 VAC input voltage. One year warranty is provided against workmanship. It is an indigenous product. Machine will be supported with repairs at reasonable cost for at least 5 years.

**M/s DEVESH MEDITECH**

Plot No. 09, 3rd Floor, Gulabi Bagh, Industrial Culabi Bagh, Delhi-110007 India

## STORK

### Forceps disassembling instruction

One forcep disassemble into 3 parts  
Jaw insert + Insulated sheath tube + Handle

Disassembly instruction:

Step 1 : Press button

Step 2 : Elevate the rear handle

Step 3 : Extract the sheath with insert

Step 4 : Hold the jaw insert and rotate, the extract the insert



### Handles



Type E  
(Autoclave)  
Three Parts Detachable



Type D  
(Autoclave)  
Three Parts Detachable

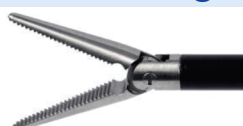


Type B  
(Autoclave)  
Three Parts Detachable  
Non-detachable for 10mm forceps



Type C  
(Autoclave)  
Three Parts Detachable  
Non-detachable for 10mm forceps

### 5mm Dissecting / Grasping Forceps & Scissors



SK2005.1 (17mm)  
Dissecting, straight



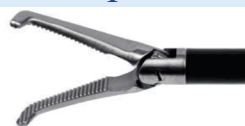
SK2005.2 (17mm)  
"Maryland"



SK2005.3 (17mm) 30°  
Dissecting, curved 30°



SK2005.4 (17mm) 45°  
Dissecting, curved 45°



SK2005.5 (17mm) 70°  
Dissecting, curved 70°



SK2005.6 (17mm) 90°  
Dissecting, right angled



SK2005.7 (17mm)  
Grasping, Plate-shaped wavy teeth



SK2005.8 (17mm)  
Grasping, "Pike mouth"



SK2006.1 (13mm)  
Scissor, straight with serration



SK2006.2 (13mm)  
Scissor, straight action



SK2006.3 (15mm)  
Scissor, curved, dual action



SK2006.4 (9mm)  
Scissor, hooked

**STORK**

## 5mm Grasping forceps



SK2006.1 (16mm)  
Scissor, curved with single ball tip



SK2007 (14mm)  
Grasping, extracting with 2x3 teeth



SK2007.1 (17mm)  
Grasping, blunt with wavy teeth



SK2007.4 (18mm)  
Grasping, atraumatic with grid flat teeth



SK2007.5 (15mm)  
Grasping, fenestrated and hollow



SK2007.6 (2x3) (15mm)  
Grasping, distal 2+3 claws with wavy teeth



SK2007.7 (10mm)  
Grasping, jaw cup with wavy teeth border



SK2007.8 (18mm)  
Grasping, atraumatic jaw cup, fenestrated



SK2007.9 (21mm)  
Gallbladder grasping, distal horizontal teeth, fenestrated



SK2007.1 (21mm)  
Grasping, plate-shaped, atraumatic, fenestrated



SK2007.11 (21mm)  
Grasping, distal horizontal teeth with hollow



SK2007.12 (32mm)  
Grasping, distal pyramidal-shaped teeth, single action



SK2007.13 (25mm)  
Grasping, long nose with pyramidal-shaped teeth



SK2007.14 (30mm)  
Grasping, plate-shaped, concave-convex jaw



SK2007.15 (20mm)  
Mesentery grasping, fenestrated



SK2007.16 (30mm)  
Grasping, distal 2+3 claws, single action



SK2007.17 (35mm)  
Intestinal grasping, plate-shaped, fenestrated



SK2007.18 (30mm)  
Grasping, long nose, distal horizontal teeth with hollow



SK2007.19 (17mm)  
Grasping, "Pike mouth with spoon, distal grid flat teeth



SK2007.21 (2x3) (17mm)  
Grasping, distal 2+3 claws



SK2007.22 (21mm)  
Appendix grasping, fenestrated and hollow



SK2007.23 (35mm)  
Grasping, long nose plate-shaped with vertical groove



SK2007.24 (17mm)  
Grasping, spiked



SK2007.25 (21mm)  
Universal grasping forceps



SK2007.26 (17mm)  
Grasping, distal 2+3 claws with horizontal serration



SK2007.27 (17mm)  
Grasping, distal 2+3 claws with horizontal serration, fenestrated



SK2007.28 (21mm)  
Grasping, atraumatic

**M/s DEVESH MEDITECH**

Plot No. 09, 3rd Floor, Gulabi Bagh, Industrial Culabi Bagh, Delhi-110007 India

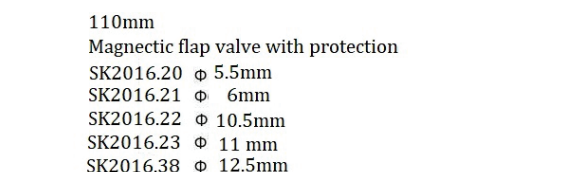


# STORK

## Trocar, Adaptor, Sealing Cap



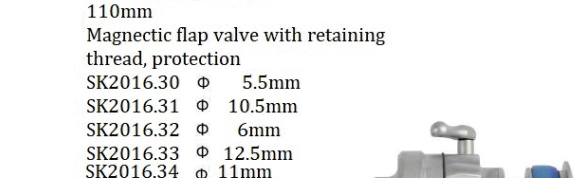
110mm  
Magnetic flap valve  
SK2016.12  $\phi$  5.5mm  
SK2016.13  $\phi$  10.5mm  
SK2016.14  $\phi$  11mm  
SK2016.15  $\phi$  6mm  
SK2016.16  $\phi$  12.5mm



110mm  
Magnetic flap valve with protection  
SK2016.20  $\phi$  5.5mm  
SK2016.21  $\phi$  6mm  
SK2016.22  $\phi$  10.5mm  
SK2016.23  $\phi$  11mm  
SK2016.38  $\phi$  12.5mm



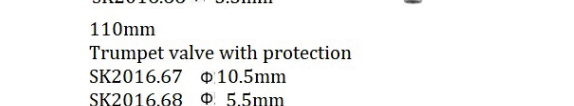
110mm  
Magnetic plate valve with retaining thread  
SK2016.17  $\phi$  5.5mm  
SK2016.18  $\phi$  10.5mm  
SK2016.24  $\phi$  6mm  
SK2016.25  $\phi$  12.5mm  
SK2016.35  $\phi$  11mm



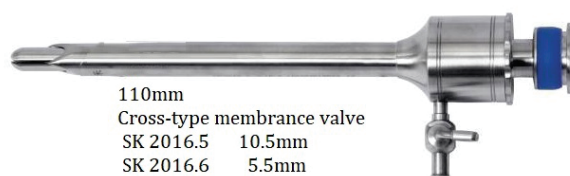
110mm  
Magnetic flap valve with retaining thread, protection  
SK2016.30  $\phi$  5.5mm  
SK2016.31  $\phi$  10.5mm  
SK2016.32  $\phi$  6mm  
SK2016.33  $\phi$  12.5mm  
SK2016.34  $\phi$  11mm



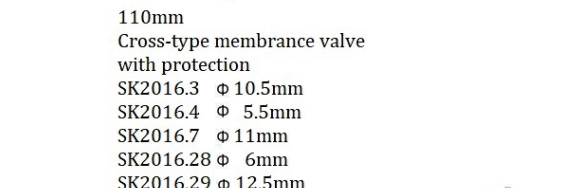
110mm  
Trumpet valve  
SK2016.65  $\phi$  10.5mm  
SK2016.66  $\phi$  5.5mm



110mm  
Trumpet valve with protection  
SK2016.67  $\phi$  10.5mm  
SK2016.68  $\phi$  5.5mm



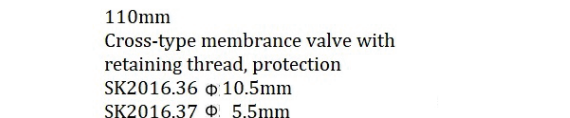
110mm  
Cross-type membrane valve  
SK 2016.5 10.5mm  
SK 2016.6 5.5mm  
SK 2016.8 11mm  
SK 2016.9 12.5mm  
SK 2016.10 6mm



110mm  
Cross-type membrane valve with protection  
SK2016.3  $\phi$  10.5mm  
SK2016.4  $\phi$  5.5mm  
SK2016.7  $\phi$  11mm  
SK2016.28  $\phi$  6mm  
SK2016.29  $\phi$  12.5mm



110mm  
Cross-type membrane valve with retaining thread  
SK2016.3A  $\phi$  10.5mm  
SK2016.4A  $\phi$  5.5mm



110mm  
Cross-type membrane valve with retaining thread, protection  
SK2016.36  $\phi$  10.5mm  
SK2016.37  $\phi$  5.5mm



SK2017.5  
Reducer  
 $\phi$ 10.5mm- $\phi$ 5.5mm



SK2017.4  
Adaptor  
 $\phi$ 10.5mm- $\phi$ 5.5mm



SK2017.1  
Reducer  
 $\phi$ 10.5mm -  $\phi$ 5.5mm  
SK2017.2  
Reducer  
 $\phi$ 5mm -  $\phi$ 3mm



SK6002.1  
Sealing Cap  
 $\phi$  5mm



SK6002.2  
Sealing Cap  
 $\phi$  10mm



SK6002.3  
Sealing Cap  
 $\phi$  12.5mm



SK6001.1  
Cross-type membrane valve  
 $\phi$  5mm



SK6001.2  
Cross-type membrane valve  
 $\phi$  10mm



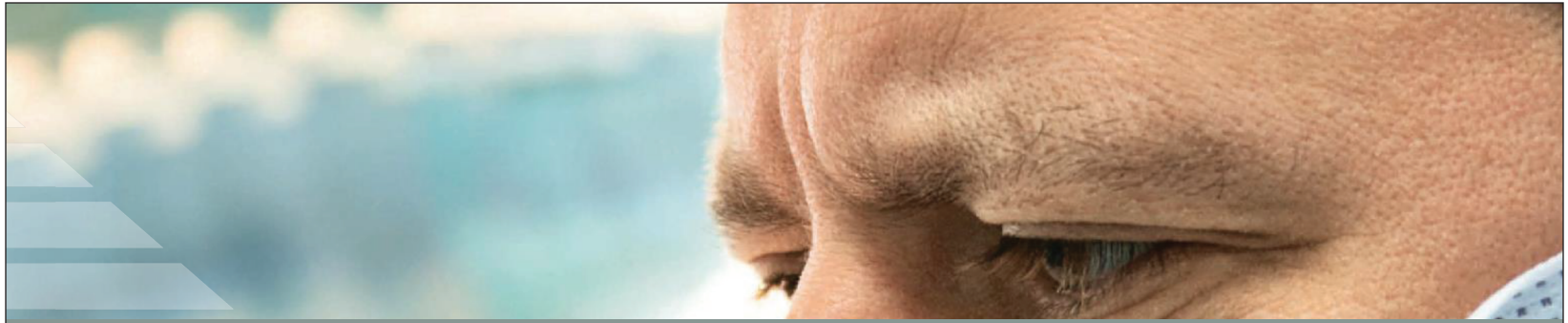
SK60003.2  
O-ring  
 $\phi$  10.5mm



SK6003.3  
O-ring  
 $\phi$  5.5mm

M/s DEVESH MEDITECH

Plot No. 09, 3rd Floor, Gulabi Bagh, Industrial Culabi Bagh, Delhi-110007 India



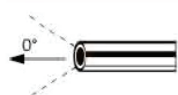
## Rigid Cystoscope

- ★ Clear imaging
- ★ Simple operation
- ★ Easy to clean
- ★ Safe and reliable



**Cystoscope**

## Rigid Cystoscope Urethro-cystoscopy set



**SK010 0 DEGREE  
ENDOSCOPE  
4 X 302MM**



**SK012 30 DEGREE  
ENDOSCOPE  
4 X 302MM**



**SK013 70 DEGREE  
ENDOSCOPE  
4 X 302MM**

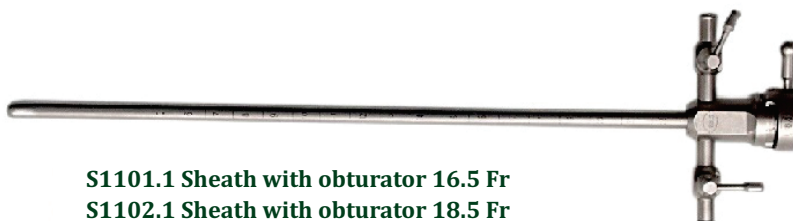


**S1001 Adaptor**



**S2145 Sealing Cap**

1. Connecting to STORK light guide cable  
Connecting to Olympus light guide cable
2. Connecting to STORZ light guide cable
3. Connecting to ACMI, STRYKER light guide cable



- S1101.1 Sheath with obturator 16.5 Fr**  
**S1102.1 Sheath with obturator 18.5 Fr**  
**S1103.1 Sheath with obturator 21 Fr**  
**S1104.1 Sheath with obturator 23 Fr**

**S4010 Cleaning Bar  $\Phi$  3 x 340mm**



**S5010 Light Guide Cable  
 $\Phi$  4.5 X 2000mm**



**S1106.1  
Endoscope Bridge (Single Channel)**



**S1106.2  
Endoscope Bridge (Double Channel)**

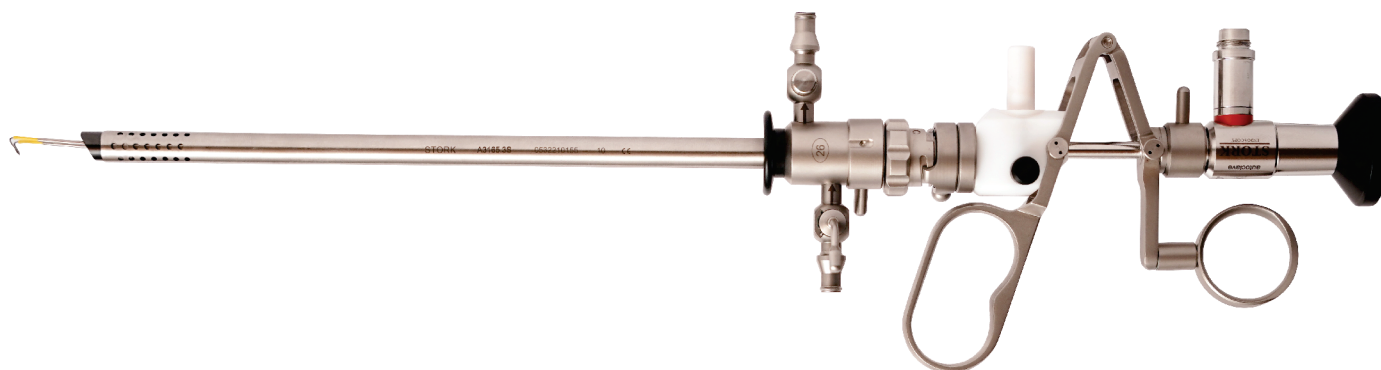
**M/s DEVESH MEDITECH**

Plot No. 09, 3rd Floor, Gulabi Bagh, Industrial Culabi Bagh, Delhi-110007 India



STORK

## RESECTOSCOPY SET (Lockable)



- 1 STORK
- 2 OLYMPUS
- 3 STORZ
- 4 WOLF

Connecting to STORK - light guide cable  
Connecting to OLYMPUS - light guide cable  
Connecting to STORZ - light guide cable  
Connecting to WOLF - light guide cable



T1001 Adaptor



M1015  
High frequency cord (Monopolar)



1.3-DS-24  
Loop 30°

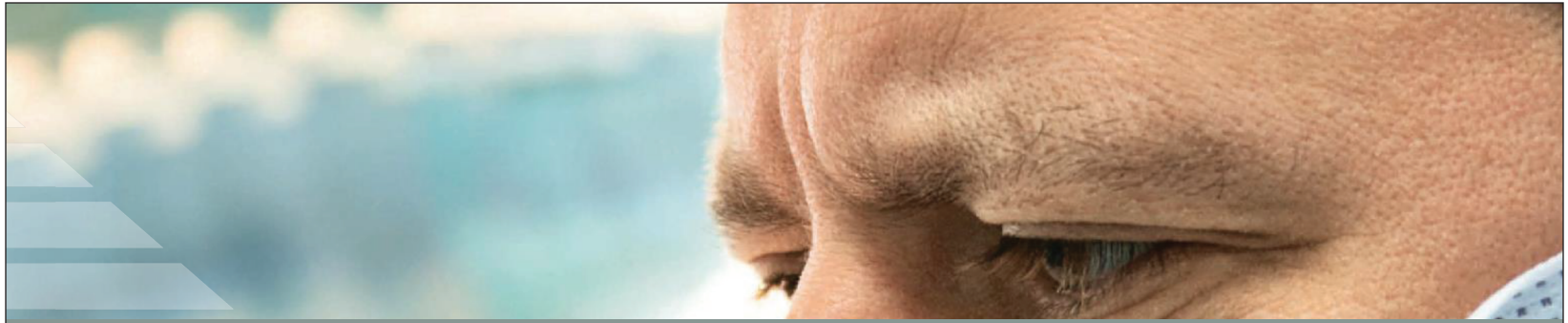
4-DS-24  
Roller

5-DS-24  
Spike

3.1-DS-24  
Spud 30°

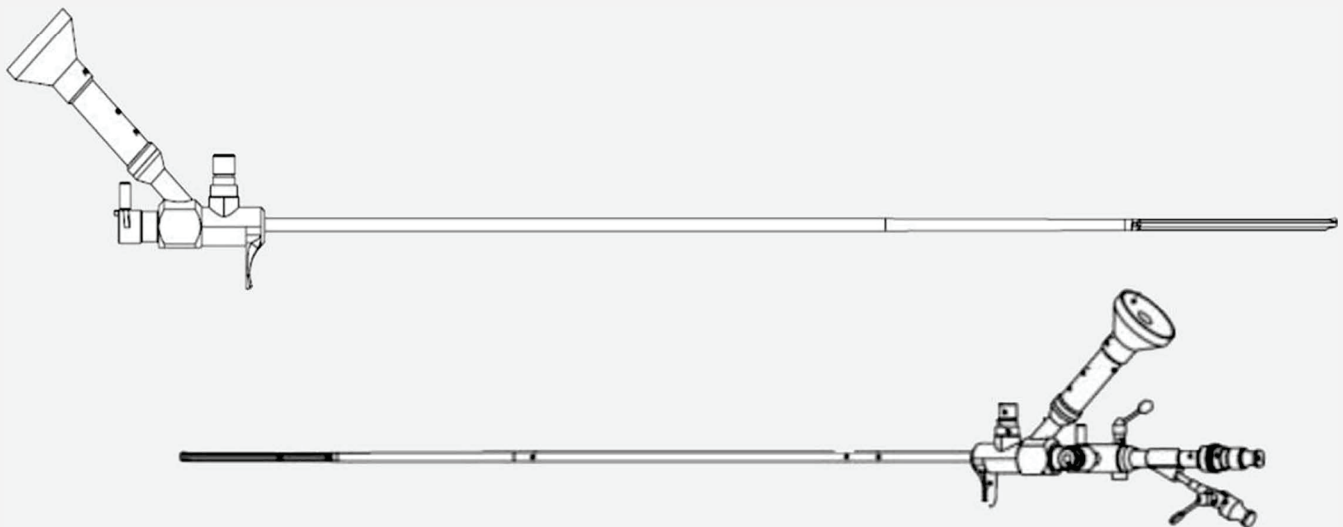
**M/s DEVESH MEDITECH**

Plot No. 09, 3rd Floor, Gulabi Bagh, Industrial Culabi Bagh, Delhi-110007 India



## Ureterorenoscope

- ★ Clear imaging
- ★ Simple operation
- ★ Easy to clean
- ★ Safe and reliable



**Ureterorenoscope**



Instrument channel

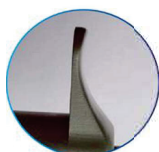
**Unique large channel design**

- Double water blocking design.
- Leakage proof design of guide wire and instrument access channel.

Valve switch (removable)

Flushing fluid inlet and outlet

Operating handle



**Handle design**

- Ergonomic stereo handle design.
- It is convenient for users to operate.

Connecting to WOLF light cable  
Connecting to OLYMPUS light cable  
Connecting to STORZ light cable

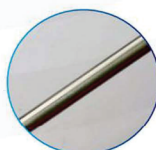


Waterproof valve



Big horn  
Waterproof valve

Eyepiece and image beam



Tube sheath

**Unique sheath design**

- The tube sheath of this product is progressive tube sheath.
- The length of the anterior tube sheath is 9cm.
- It is more beneficial for patients with urethral stricture.
- It is convenient for users to operate.

Cat No. SK 4337A

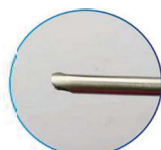
Lighting Fiber

Optical System

Auxiliary instruments

Instrument Channel

Objective lens

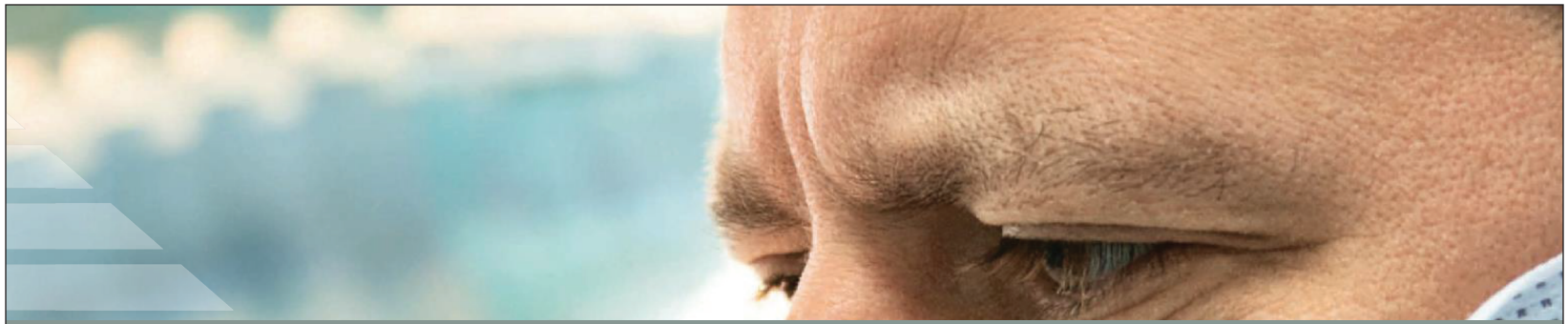


**Wider field of view (FOV)**

- (the actual active field of view angle reaches 81°)
- The large field of view angle can solve the practical problem that the angle of the endoscope is not enough and the endoscope needs to be rotated or bent for adjustment operation.
- The visual situation in the ureter can be seen at a glance without dead angle.

STORK






## General Notes

- Endoscope adopt imported stainless steel material, assembled in Germany
- Adopt the imported image bundles, can stand proper bending
- Eliminate the reticulate pattern in the field of view, make image clear
- With direction index, sapphire lens cover, never abrasion
- Sleek insert part, tapering outer sheath, avoid scratches
- The angle of direction is 0°, field angle is 81°, easy to observe the position of instrument in the field of view
- Separate endoscope from water valve and instrument, easy to disinfect and operate
- All instruments adopt imported stainless steel material
- Double water valves make the perfusion smooth


Model	mm	Degree	Fr.	mm	Maximum Size (Fr.)	Comparision	Remarks
SK 4337A	6	81	6/7.5	430	1x5/2x3	8705.402	Adult split type



## STORK SINUSCOPE

 SK0042 30 Degree 4x175mm

 SK0044 45 Degree 4x175mm

 SK0113 70 Degree 4x 175mm

 SK0040 0 Degree 4x 175mm



SINUSCOPE



1. Endoscope adopts imported stainless steel material
2. Endoscope adopts German optic glass light fiber and light cone
3. Adopt the patented technology of rod optical lens, clear field view
4. With direction index, sapphire lens cover never abrasion
5. The autoclave endoscope can be chosen

---

**M/s DEVESH MEDITECH**

Plot No. 09, 3rd Floor, Gulabi Bagh, Industrial Culabi Bagh, Delhi-110007 India